

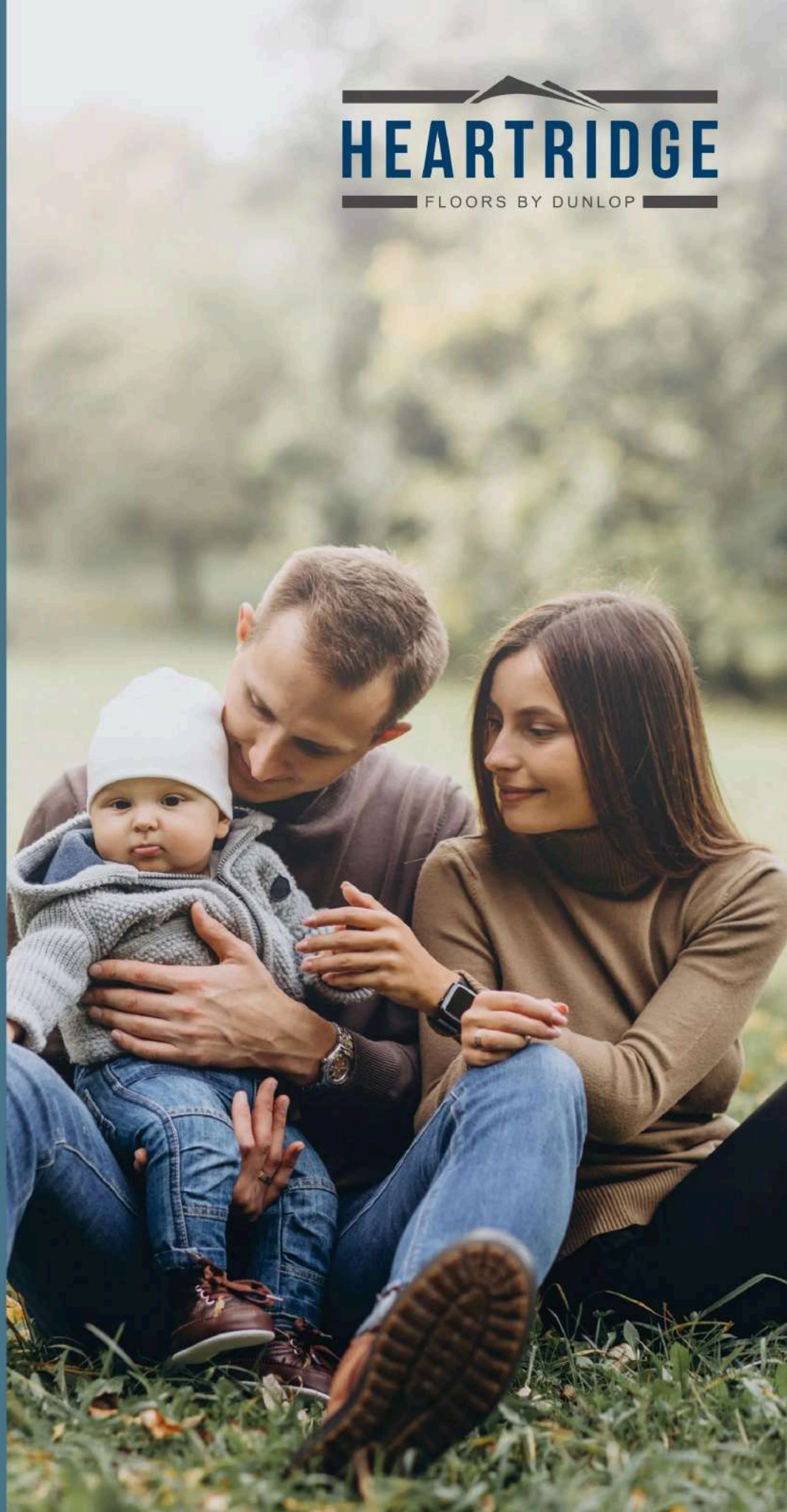
HOME IS WHERE THE HEART IS

VINYL PLANK

SUMMERHILL
COLLECTION

heartrIDGE.com.au

**HEARTRIDGE**
FLOORS BY DUNLOP



A warm, rustic interior scene featuring a wooden table with a teapot, a chair, and a vase of dried flowers. The text is overlaid on the image in white, bold, sans-serif font.

HOME REFLECTS WHO WE ARE
IT'S A SPACE WE CREATE
**TO RECHARGE
OUR SOUL**

A PLACE TO BE SAVOURED
AND ENJOYED WITH LOVED ONES

**HOME IS WHERE
THE HEART IS**



CONTENTS

Why choose Heartridge floors	3	Why Vinyl Planks	13	Request Sample	17
Constructions	9	Summerhill Range	15	Cleaning & Adhesives	19

WHY CHOOSE HEARTRIDGE FLOORS?

For over 50 years, we as an industry have always been passionate and proud of the products we offer.

We search the globe for the latest in flooring innovation and select only the most beautiful colour variations that nature can provide us.

Heartridge is the perfect flooring option to make your space a place to come home to. Available in Engineered Timber, Hybrid Plank, Luxury Vinyl Plank and Vinyl Plank flooring.





AT HEARTRIDGE, WE BELIEVE
BEAUTIFUL FLOORS
ARE THE **HEART** **TO ANY HOME**

WILLOW GREY





REALISM THAT LASTS

With our nature-inspired Vinyl Plank flooring, you can infuse your space with warmth, elegance, and the promising beauty of timber.

This stunning range effortlessly brings the rich textures of timber to your space, thanks to its meticulous wood grain embossing and refined low gloss finish.

Our Vinyl Planks are designed for a smooth installation, allowing you to create a cohesive and stylish aesthetic without the hassle.

Rest assured that all Heartridge Vinyl Planks are crafted to the highest standards offering you peace of mind that your floors will endure and remain a timeless asset to your home.



A DURABLE SURFACE TO STAND THE TEST OF TIME

Dunlop Wearshield provides the extra protection your planks need for your home. The innovative low gloss polyurethane UV Cured protective layer with ceramic beads is spill, dent and scratch resistant – so you can easily care for your floors and enjoy them for many years to come.



SUSTAINABLE FLOORING THAT LEAVES A LIGHTER FOOTPRINT

We are committed to helping the environment and making our homes a healthier place. Awarded the Best Practises PVC Certification by Bureau Veritas, each Heartridge Summerhill Vinyl Plank is low in VOC's and phthalate free, helping improve air quality in the home.



BROWN MAPLE



**BUILT TO
WITHSTAND THE FLOW
OF DAILY LIFE**

Our Summerhill Vinyl Planks are crafted to the highest standards offering you peace of mind that your floors will endure and remain a timeless asset to your home.

CONSTRUCTION

Plank Size: 2.5 x 189 x 1229mm



A durable surface to stand the test of time

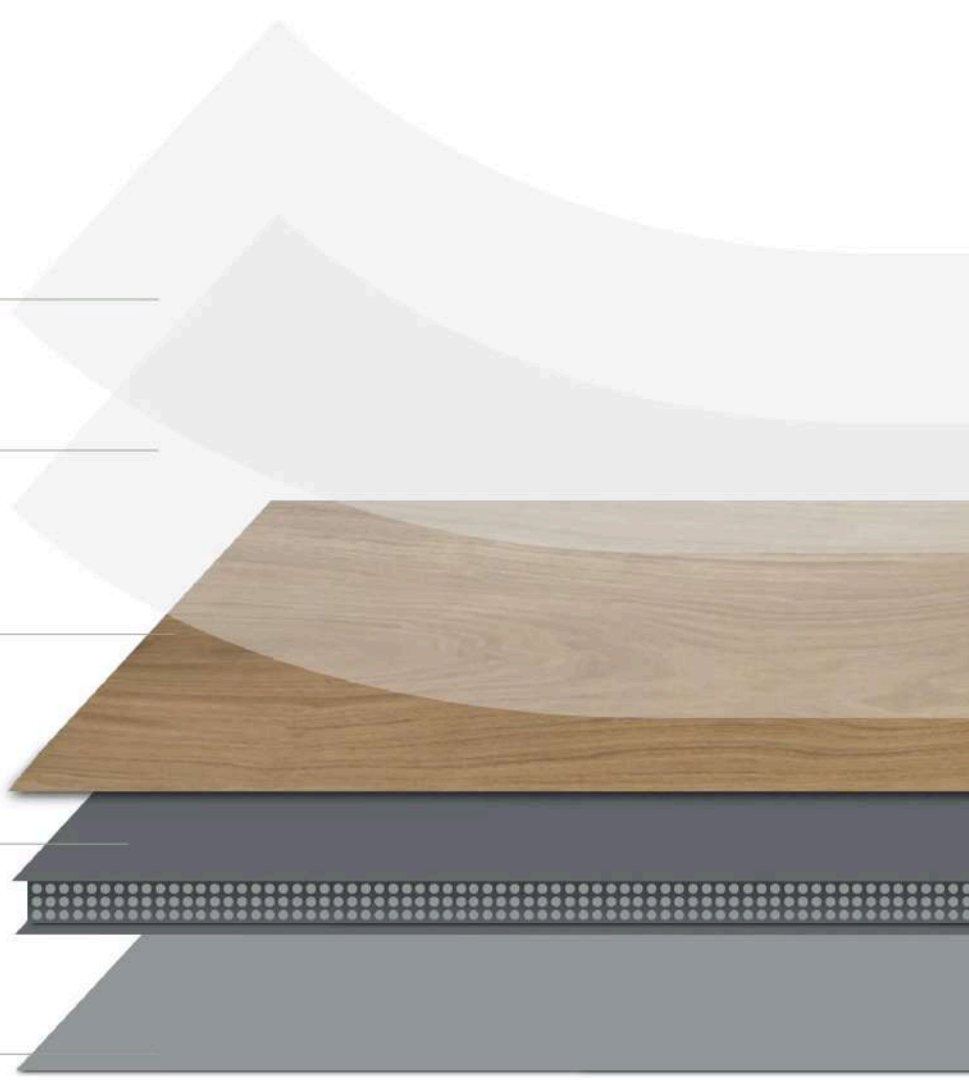
Ceramic Bead Enhanced Urethane Coating for superior wear and scratch resistance

Low gloss, clear wear layer for protection

High resolution décor paper with timber print for a realistic timber look

Virgin PVC core infused with Fiberglass mesh for enhanced stability

Textured matte backing layer for improved bond strength





SUSTAINABLE FLOORING THAT LEAVES A LIGHTER FOOTPRINT



Backed by the Sensitive Choice program, our Vinyl Plank products are phthalate-free & low in VOC's, contributing to cleaner indoor air quality.



Green Building
Council Australia
Member



MADE USING
BEST ENVIRONMENTAL
PRACTICE™

Awarded certificate of compliance (COC). For Best Practice PVC by Bureau Veritas for all Heartride Hybrid, Luxury Vinyl and Vinyl Plank flooring products.

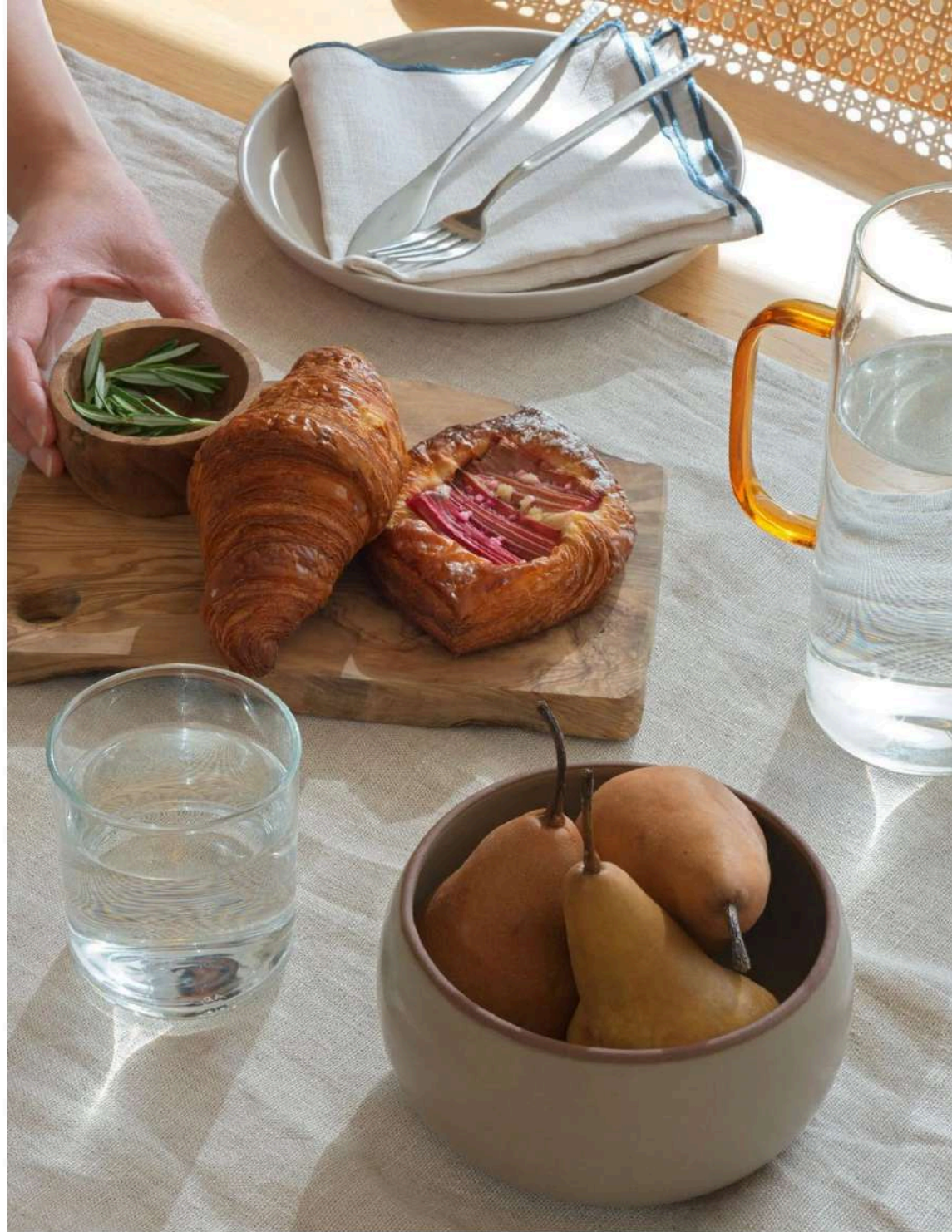
[Learn More](#)



DESIGNED FOR DURABILITY

Featuring a Heavy Duty 0.55mm Wear Layer, Summerhill Vinyl Planks can handle the wear and tear of daily family life and qualifying them for use in light commercial settings.

BURLYWOOD



SPILL, DENT AND SCRATCH RESISTANT

Rest assured with our Summerhill Vinyl Planks for many years to come as the innovative low gloss polyurethane UV Cured protective layer with ceramic beads is spill, dent and scratch resistant.

WHY VINYL PLANKS?



SOFT UNDERFOOT

Our uniquely flexible PVC formula gives our product a soft and comforting feel underfoot.



DURABLE SURFACE

Featuring a Heavy Duty 0.55mm Wear Layer, Vinyl Planks can handle the wear and tear of daily family life and light commercial settings.



PERFECT FOR HIGH TRAFFIC AREAS

Each plank is intricately embossed and features a micro-bevelled edge for that added element of realism. The 0.55mm wear layer will help your floor stand up to the tests of daily family life.



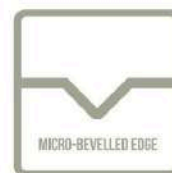
EASY TO CLEAN AND MAINTAIN

Real timber floors need plenty of upkeep to retain their appearance but not so with Vinyl Planks. Their unique design and construction mean you don't need to oil, sand or refinish the boards.



TESTED AND APPROVED

Our Vinyl planks undergo rigorous testing in accordance with Australian standards. They are free from toxic phthalates and have remarkably low levels of VOCs.



MICRO-BEVELLED EDGE

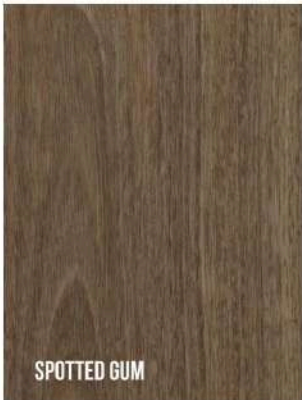
The micro-bevelled edge is a subtle touch that completes the look to suit any decor in your home.



SMOKEY QUARTZ

SUMMERHILL RANGE

Inspired by the beauty of nature, our Summerhill Range is sure to make an impression on any home.





INSPIRED BY NATURE

Available in 12 sophisticated range of colours, Summerhill Vinyl Plank use innovative technology to mimic the look of real timber, bringing the tranquility of the outdoors into your home while suiting any decor and budget.

BURLAP HUE



**STILL CAN'T FIND THAT
PERFECT COLOUR FOR
YOUR HOME?**

YOU CAN REQUEST A FREE SAMPLE

SMOKEY QUARTZ



3 FREE SAMPLES DELIVERED TO YOUR DOOR

Whether you're renovating an existing home or building a new dwelling from the ground up, the colour and quality of the flooring is an important decision to make. This is why we've set up our Request a Sample service to help you find the perfect colour!

Our Request a Sample service is quick and simple to do. Our samples will be sent to you directly from our warehouse. Choose from a variety of colours across our entire range, to help you compare and contrast the sample with your desired palette. Visit our website today and make your first order!

1



Visit heartridge.com.au

2



Choose and order your samples

3



We'll deliver it to your door

Order Now



EASY TO CLEAN

WITH BONA FLOOR CARE PRODUCTS

We recommend the use of Bona Floor Care products to keep your floors looking brand new and your home beautiful.

AN IMMACULATE HOME IN 2 SIMPLE STEPS

- Remove loose dirt, grit and dust with a Bona Dusting Pad. If using a vacuum cleaner, ensure the cleaning head has a soft brush to prevent the occurrence of scratches on the floor surface.
- Use a Bona Spray Mop with Bona Stone, Tile & Laminate Cleaner for a spotless finish.

[Learn More](#)



Ultralay

Hard-Set Vinyl Plank Adhesive

LOW VOC



INTRODUCING OUR NEWEST HARD-SET VINYL PLANK ADHESIVE

Ultralay is a full cure hard set adhesive with Low VOC emission. It is a high-performance polymer blend-based adhesive designed for the installation of commercial and domestic PVC planks and tiles.

It exhibits superior plasticizer resistance and thermal stability, enhancing the dimensional integrity of flooring materials. The adhesive is designed for internal use only.

[Learn More](#)



For more information contact Dunlop Flooring
on 1800 622 293 or visit heartridge.com.au



October 2024