



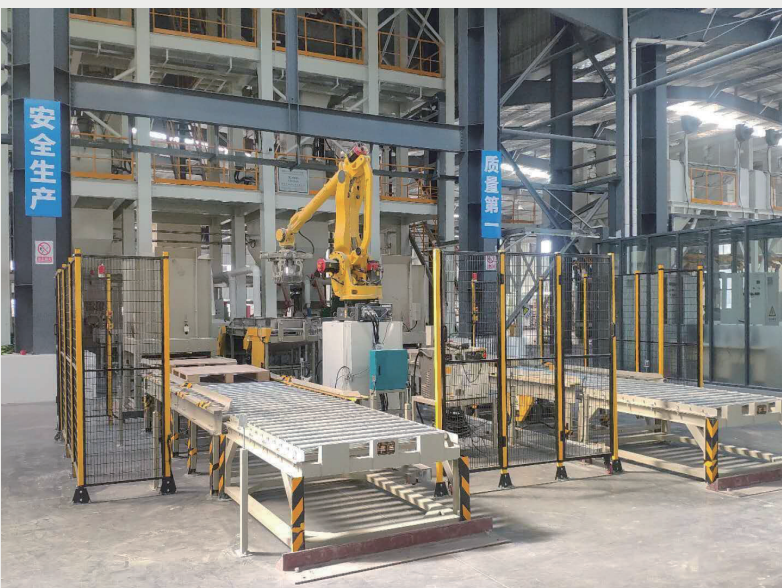
THE ULTIMATE IN FLOOR PREPARATION





Cemimax is a Professional Manufacturer, providing a complete flooring installation solution. Cemimax Provides our customer's the complete flooring installation system of cementitious based substrate preparation products and adhesive's for floor covering. Through innovation technology and high quality product's, we along with our clients have created successful projects around the world. We continue to focus on strong research and development to ensure Cemimax only produces and supplies the highest quality assured environmentally friendly and most cost-effective products in the market. We uphold the core value excellence from enthusiasm and passion within our team. Today Cemimax is a leading Manufacture providing the best flooring installation products on a global scale that the world is now experiencing.

“To Expect Nothing Less” is our Goal, The Cemimax team believes that a sustainable and long-term growth aims for our company to become the best partner to our Customers and their Success.



DL10

Levelling cement flooring compound to economically bulk fill and raise floors

DESCRIPTION:

DL10 is an advanced cement and polymer-based levelling compound with special aggregate. DL10 is formulated with high flow performance for levelling work on the installation of thick layers. DL10 is very suitable for quick-setting preparation solutions and also can be used as a fast set screed with low ratio water mixing.

PRODUCT PROPERTIES/BENEFITS:

Plastic, dry cement mortar with finely graded fillers. When mixed with water, produces a hydraulic-setting smoothing compound with good flow properties and high coverage.

COMPOSITION:

Special cements, mineral fillers, polyvinyl-acetate-copolymers, flow agents and additives.

- Easy application
- Quick setting
- Superior flow — fast application
- Can be used as a fast set screed
- High-depth limitation 1.5mm to 150mm
- Compatible with other cemimax levelling compounds
- For Interior and Exterior use
- Suitable for Radiant Floor Heating systems

TECHNICAL DATA:

Compressive Strength

After 1 day approx. 15MPa
After 7 days approx. 20MPa
After 28 days approx. 30MPa

Tensile Bending Strength

After 1 day approx. 5MPa
After 7 days approx. 7MPa
After 28 days approx. 8MPa

Packaging Size: 20kg/bag

Shelf-life: 6-12 months

Coverage: Approximately 5-6m² at 3mm thick

VOC Level: <0.5 mg/m³

Working time: 15-25mins

Drying time: 10-30mins

Suitable for direct stick



DL33

Self-leveling Compound

DESCRIPTION:

DL33 is an advanced cement and polymer based levelling and smoothing compound. DL33 is formulated for leveling work on standard construction in universal areas. DL33 is suitable for internal use on new or existing substrates for trafficable areas that are used internally as a underlayment.

PRODUCT PROPERTIES/BENEFITS:

Plastic dry cement mortar with finely graded fillers. When mixed with water, produces a hydraulic-setting smoothing compound with good flow properties and high coverage.

COMPOSITION:

Special cements, mineral fillers, polyvinyl-acetate-copolymers, flow agents and additives.

- Easy apply
- Quick setting
- Superior flow – fast application
- Flexible – hand mix or pump application
- Very economic
- Interior use

TECHNICAL DATA:

Compressive Strength

After 1 Day Approx. 15mpa
After 7 Days Approx. 25mpa
After 28 Days Approx. 30mpa

Tensile Bending Strength

After 1 Day Approx. 4mpa
After 7 Days Approx. 5mpa
After 28 Days Approx. 6mpa

Pack-size: 20kg/bag

Drying time: 2 hours

working time: 20-30 minutes

Shelf-life: Min,12 Months

Coverage: Approximately 5-6m² at 3mm thick

VOC Level: <0.5 mg/m³



DL55

General - purpose, Self-smoothing and leveling compound

DESCRIPTION:

DL55 is an advanced cement and polymer based levelling and smoothing compound. DL55 is formulated for experienced commercial contractors to smooth and level large commercial and retail areas. Once dry it is suitable for the application of vinyl, carpet and tile floor finishes. Unlike normal hydration levellers, DL55 will harden and dry at temperatures down to 10°C.

PRODUCT PROPERTIES/BENEFITS:

Plastic dry cement mortar with finely graded fillers. When mixed with water, produces a hydraulic-setting smoothing compound with good flow properties and high coverage.

COMPOSITION:

Special cements, mineral fillers, polyvinyl-acetate-copolymers, flow agents and additives.

- Super smooth - requires no sanding
- Versatile - apply 1.5mm to 40mm in one application
- Rapid hardening - walkable from 2 hours
- Superior flow - fast application
- Flexible - hand mix or pump application
- For Interior use
- Suitable for Radiant Floor Heating systems

TECHNICAL DATA:

Compressive Strength

After 1 day approx. 15MPa

After 7 days approx. 25MPa

After 28 days approx. 35MPa

Tensile Bending Strength

After 1 day approx. 5MPa

After 7 days approx. 7MPa

After 28 days approx. 8MPa

Color: Grey

Water / compound ratio: 0.22/1

Working time: 20-30 minutes

Pack-size: 20kg/bag

Shelf-life: 6-12 months

Coverage: Approximately 6m² at 3mm thick

VOC Level: <0.5 mg/m³

Drying time: 2hrs

Suitable for direct stick



DL59

Self-smoothing and levelling compound as surface overlay floors

DESCRIPTION:

DL59 is a cement based levelling compound with very high compressive strength to C40. DL59 is especially suitable for high traffic, heavy wear location. DL59 is especially used as overlays for polished concrete floors.

PRODUCT PROPERTIES/BENEFITS:

Plastic dry cement mortar with finely graded fillers. When mixed with water, produces a hydraulic-setting smoothing compound with good flow properties and high coverage.

COMPOSITION:

Special cements, mineral fillers, polyvinyl-acetate-copolymers, flow agents and additives.

- Super smooth - requires no sanding
- Extremely high flexible strength - 60%
- Versatile - apply 1.5mm to 40mm in one application
- Rapid hardening - walkable from 2 hours
- Superior flow - fast application
- Flexible - hand mix or pump application
- Can be polished
- For Interior and Exterior use
- Suitable for Radiant Floor Heating systems
- Pigments can be added for colour
- Aggregates can be added for exposed stone effect

TECHNICAL DATA:

Compressive Strength

After 1 day approx. 15MPa

After 7 days approx. 25MPa

After 28 days approx. 40MPa

Tensile Bending Strength

After 1 day approx. 5MPa

After 7 days approx. 7MPa

After 28 days approx. 8MPa

Packaging Size: 20kg/bag

Shelf-life: 6-12 months

Coverage: Approximately 6m² at 3mm thick

Working time: 20-30mins

VOC Level: <0.5 mg/m³

Drying time: 2hrs

Suitable for direct stick



DL59 Flex

Fiber-Reinforced smoothing compound

DESCRIPTION:

DL59 Flex is a Fiber-Reinforced cementitious self-leveling smoothing compound with enhanced flexural strength. It resists cracking and provides an exceptionally smooth, hard surface for use on timber substrate in residential and commercial areas.

COMPOSITION:

Special cements, mineral fillers, polyvinyl-acetate- copolymers, flow agents and additives.

- Fiber-reinforced, resists cracking or shrinking
- Super smooth – requires no sanding
- Extremely high strength of compressive and bending
- Versatile – apply 1.5mm to 100mm in one application
- Rapid hardening – walkable from 2 hours
- Superior flow – fast application
- Flexible – hand mix or pump application
- Can be polished
- For Interior and Exterior use
- Suitable for Radiant Floor Heating systems
- Suitable for use over acoustic underlays
- Pigments can be added for colour
- Aggregates can be added for exposed stone effect
- Suitable for timber flooring as direct stick and for overlayment over the timber substrate.

TECHNICAL DATA:

Compressive Strength

After 1 day approx. 15MPa

After 7 days approx. 25MPa

After 28 days approx. 40MPa

Tensile Bending Strength

After 1 day approx. 5MPa

After 7 days approx. 7MPa

After 28 days approx. 8MPa

Pack-size: 20kg/bag

Shelf-life: Min,6 months

Coverage: Approximately 4m² at 3mm thick



BICOMAX

Bi-Components High Performances self leveling Compound

DESCRIPTION:

Cemimax Bicomax is a Bi-Components high performance self leveling compound with low odour, fast setting, fast drying, special designed for wet areas , high moisture vapor control subfloor, exterior and suitable for preparing sound internal subfloors prior to the installation of new floorcoverings. Bicomax is particularly suitable for use over old adhesive residues (including bitumen and carpet tile tackifiers) without the need for priming. Bicomax can be used for patch filling timber floors prior to overlaying with plywood. It is suitable for use in clinical and biologically sensitive areas such as hospitals, laboratories, clean rooms etc.

Bicomax mixed with set of Liquid component can be applied to suitably prepared steel decks in light to medium-duty traffic areas.

Bicomax is unaffected by moisture and is suitable for application over damp, clean, uneven concrete and sand/cement screeds, prior to application of Cemimax waterproof surface membranes or direct application.

Bicomax is also suitable for use over a wide range of other subfloor types including Cemimax waterproof surface membranes, sand/cement screed, concrete, granolithic, terrazzo, asphalt, steel, old vinyl asbestos tiles, epoxy and polyurethane resins, ceramic and quarry tiles.

PRODUCT PROPERTIES/BENEFITS:

- Suitable for wet areas,high moisture vapor control , exterior
- Moisture tolerant - can be used under Cemimax waterproof surface membranes
- Can be filled up to 100mm
- Fast setting
- Excellent self-smoothing properties

TECHNICAL DATA:

Compressive Strength

After 1 day approx. 15MPa

After 7 days approx. 20MPa

After 28 days approx. 35MPa

Tensile Bending Strength

After 1 day approx. 4MPa

After 7 days approx. 5MPa

After 28 days approx. 6MPa

Pack-size: 20kg/bag & 4.4kg/Plastic drum

Shelf-life: Min,12 months

Coverage: Approximately 5-6m² at 3mm thick



HP GROUTING

High-performance General purpose Class C construction grout

DESCRIPTION:

Cemimax UltraFLOW HP GROUT is cementitious high- performance General purpose Class C construction grout, high-quality graded aggregates, and additives, which control expansion for low shrinkage the grout is in a plastic state.

COMPOSITION:

- Resistant to impact and vibration
- Shrinkage compensated
- Gaseous expansion while in a plastic state eliminates shrinkage and settlement.
- Displaces water
- Non-metallic iron content
- Can be dry packed, rammed, trowelled, or poured
- Pump able for larger applications
- Grouting for unlimited depth working

TECHNICAL DATA:

Compressive Strength

After 1 day approx. 30MPa
After 7 days approx. 50MPa
After 28 days approx. 70MPa

Tensile Bending Strength

After 1 day approx. 4MPa
After 7 days approx. 9MPa
After 28 days approx. 11MPa

Pack-size: 20kg/bag

Shelf-life: Min,6 months

Application Temp:Min 10°C-Max 30°C

Coverage –(Kg/m²/mm):2.0

Water Add:3-3.4L for pourable

Setting Time:(Dry Pack-Flowable)

Initial Set: 2-4 hours

Final Set: 3-6 hours



GP GROUTING

High-performance General purpose Class A construction grout

DESCRIPTION:

Cemimax UltraFLOW GP GROUT is cementitious high- performance General purpose Class A construction grout, high-quality graded aggregates, and additives, which control expansion for low shrinkage the grout is in a plastic state.

COMPOSITION:

- Resistant to impact and vibration
- Shrinkage compensated
- Gaseous expansion while in a plastic state eliminates shrinkage and settlement.
- Displaces water
- Non-metallic iron content
- Can be dry packed, rammed, trowelled, or poured
- Pump able for larger applications
- Grouting for unlimited depth working

TECHNICAL DATA:

Compressive Strength

After 1 day approx. 20MPa
After 7 days approx. 40MPa
After 28 days approx. 50MPa

Tensile Bending Strength

After 1 day approx. 1MPa
After 7 days approx. 8MPa
After 28 days approx. 9MPa

Pack-size: 20kg/bag

Shelf-life: Min,6 months

Application Temp:Min 10°C-Max 30°C

Coverage –(Kg/m²/mm):2.0

Water Add:3-3.4L for pourable

Setting Time:(Dry Pack-Flowable)

Initial Set: 2-4 hours

Final Set: 3-6 hours



DT88

DESCRIPTION:

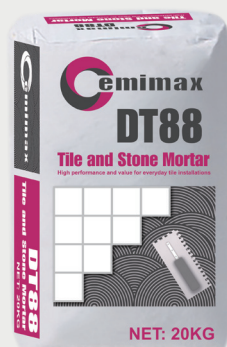
Cemimax DT88 is a polymer-modified, cement-based mortar for setting quarry, ceramic and most natural stone (including mosaics) and also for tiles over common interior surfaces, including exterior-grade plywood, as well as over exterior concrete and masonry surfaces. DT88 also can also be used to install porcelain tiles over common interior surfaces as well as exterior, horizontal concrete and masonry surfaces. DT88 is recommended for most tile sizes.

PRODUCT PROPERTIES/BENEFITS:

- Universal use for setting porcelain, quarry, ceramic and most tile floor coverings natural stone* tiles
- Water resistant
- Easy to mix and apply
- High bonding strength and long-term durability
- One-product Use for interior and exterior floors and walls

TECHNICAL DATA:

Mixing Ratio: 5 Litres of water/bag
 Approximate Coverage per 20 kg
 6.35 mm x 6.35 mm x 6.35 mm Notch Trowel 7.2 m²
 6.35 mm x 9.525 mm x 6.35 mm Notch Trowel 5.0 m²
 12.7 mm x 12.7 mm x 12.7 mm Notch Trowel 3.7 m²
 Open Time: Up to 5-10 minutes
 Working Time: Approx. 30 minutes
 Working Temperature: +5 to +35 °C
 Regulation Time: Approx 5 minutes
 Colors: grey
 Packaging: 20kg per bag
 Storage: Store in a cool, dry area.
 Do not leave bags exposed to sun.
 Shelf life: 9 Months
 C2S2 rating
 Suitable for moisture sensitive stone



ECOTAZ

DESCRIPTION:

Ecotaz is a cementitious based levelling compound designed and based on a decorative overlay with terrazzo quartz and sand granular components.

PRODUCT PROPERTIES/BENEFITS:

Plastic dry cement mortar with finely graded fillers. When mixed with water, produces a hydraulic-setting smoothing compound with good flow properties and high coverage.

COMPOSITION:

Special cements, mineral fillers, polyvinyl-acetate-copolymers, flow agents and additives.

- Super smooth
- Extremely high strength of compressive and bending
- Versatile - apply 5mm to 40mm in one application
- Rapid hardening – walkable from 2 hours
- Superior flow – fast application
- Can be polished
- Different colors and aggregate to selection

TECHNICAL DATA:

Compressive Strength

After 1 day approx. 15MPa
 After 7 days approx. 25MPa
 After 28 days approx. 35MPa

Tensile Bending Strength

After 1 day approx. 5MPa
 After 7 days approx. 7MPa
 After 28 days approx. 8MPa

Pack-size: 20kg/bag

Shelf-life: Min, 12 months

Coverage: Approximately 1.5kg powder/mm²



TERRAMAX

DESCRIPTION:

Terramax is a cement based leveling compound designed based on Terramax with terrawhite quartz sand component.

ESPECIALLY SUITABLE FOR:

Plastic dry cement mortar with finely graded fillers. When mixed with water, produces a hydraulic-setting smoothing compound with good flow properties and high coverage.

COMPOSITION:

Special cements, mineral fillers, polyvinyl-acetate-copolymers, flow agents and additives.

- Super smooth
- Extremely high strength of compressive and bending
- Versatile - apply 10mm to 40mm in one application
- Rapid hardening – walkable from 2 hours
- Superior flow – fast application
- Can be polished
- Different colors and aggregate to selection

TECHNICAL DATA:

Compressive Strength

After 1 day approx. 15MPa

After 7 days approx. 25MPa

After 28 days approx. 35MPa

Tensile Bending Strength

After 1 day approx. 5MPa

After 7 days approx. 7MPa

After 28 days approx. 8MPa

Pack-size: 20kg/bag

Shelf-life: Min,12 months

Coverage: Approximately 1m² at 10mm thick



PP3

Patching compound for repair, filling and patching and raise floors

DESCRIPTION:

PP3 is an advanced cement and polymer-based patching compound for repair, filling and patching up to 13mm depth. Can be used on a variety of substrates prior to installation of most flooring products. Priming is not required for most applications.

PRODUCT PROPERTIES/BENEFITS:

Plastic dry cement mortar with finely graded fillers. When mixed with water, produces a hydraulic-setting smoothing compound.

SUITABLE FOR:

- New or old cement levelling compounds
- Existing substrates with well-bonded, non-water-soluble
- Adhesive residues drying
- Large and small format tile and natural stone
- Plywood underlayment
- All standard slabs, concrete or other substrate types
- Heavy traffic areas in domestic & commercial applications
- Radiant floor heating systems

BINDERS:

Special cements, mineral fillers, polyvinyl-acetate-copolymers, and additives.

- Fast dry formula
- High strength
- Very fine aggregates
- Variable water range
- Smooth surface finish
- Excellent absorbency
- Versatile product

TECHNICAL DATA:

Pack-size: 5kg bag

Shelf-life: 6-12 months

Coverage: Approx. 2.8m² at 3mm per bag

Water mixing: Approx. 1:2 (water : powder)

Dry time:

After approx. 10 min. for walked on

After approx. 15 min. for floor covering

After approx. 12 hours for wood flooring



PP5

Cementitious, Rapid Repair Patching and Smoothing Compound

DESCRIPTION:

PP5 is an advanced cement and polymer mix that is highly versatile, rapid drying patching compound. Its fine aggregates allow it to be installed from a feather edge up to a high fill depth in one application. Superior bonding allows it to be applied over existing concrete, well-bonded flooring, properly prepared non-water soluble adhesive, well-bonded gypsum, all without having to use primer in most applications.

PRODUCT PROPERTIES/BENEFITS:

- High depth limitation
- Fast Setting - within 15 minutes
- Superior Bonding - Eliminates the need for a primer in most applications
- Low to No VOC - Healthy indoor air quality

SUITABLE SUBSTRATE CONDITIONS:

- Installed over all existing flooring that is structurally sound, thoroughly clean and free of polishes, waxes, grease, asphalt and any other contaminant that might act as a bond breaker.
- Can be applied over properly prepared and installed epoxy moisture barriers and PU vapor retarders.
- For use where Radiant Heat systems are being installed.
- Existing surfaces in need of refurbishment, such as well bonded, non-water soluble adhesive residues including cutback.
- For Interior and Exterior use

TECHNICAL DATA:

Packaging: 20kg bag

Storage: 6-12 months

Water ratio: 100:12.5 (powder : water ratio)

Working Time: 10-15 minutes

Dry Time: Moisture Sensitive Flooring 15 Minutes

Dry Time: High depth installation from 15-30 mins



Cemi Screed

DESCRIPTION:

Cemi screed is a high performance light weight mortar binder with flow ability suitable for fast dry engineered screed installation. It is made by using high-quality polymer spray dry powder resin, special cement, special additives. It is designed as concentrated binder applying with adding light weight aggregate component to create a lightweight or engineered screed for subfloor.

PRODUCT PROPERTIES/BENEFITS:

- Lightweight aggregate reduces building load
- It is used for electric heating backfill and has the function of heat storage and heat preservation
- It has a certain fluidity, easy to pave and fast to construct
- Fast curing and drying time, shorten decoration period

GUIDE FORMULATIONS FOR MIX RATIO

For light weight screed

Light weight aggregate(3-5mm) : 1:0.45/ Binder : Aggregate

For engineered screed

Sand (0.1-2mm): 1:10/Binder : Aggregate

TECHNICAL DATA:

Compressive Strength

After 1 Day Approx. 14mpa

After 4 Days Approx. 20mpa

After 7 Day Approx. 28mpa

After 14 Days Approx. 40mpa

After 28 Days Approx. 45mpa

Color: grey

Water / Compound Ratio: 0.18/1(mixed powder)

Working Time: 20-30 minutes

Pack-size: 20kg/bag(binder)

Shelf-life: Min, 12 Months

Coverage: Approximately 3m² at 5mm thick

VOC Level: <0.5 mg/m³



DP80

One component, low emission, multipurpose dispersion primer with carbon fibre technology for non absorbency substrates

DESCRIPTION:

Dispersion primer low emission, film forming primer for use over non-absorbent surfaces including non-water soluble adhesive residues. The product cannot be diluted with water and for interior and exterior use, providing overlayment compound DL10 or DL59 is applied within drying time of primer. Not to be left exposed to the elements for more than 2 hours.

SUITABLE FOR:

- Use on non-absorbent substrates, very suitable for existing surfaces in need of refurbishment, such as well-bonded and non-water-soluble adhesive residues including cutback adhesive.
- Dense & smooth surfaces, on soundly bonded ceramic and natural stone tiles, terrazzo, water resistant coatings, epoxy coatings or metal surfaces.

PRODUCT PROPERTIES:

- Ready to use
- Excellent bond
- Very fast drying
- Carbon fibre technology
- Solvent-free

BINDERS:

Modified styrene-acrylate copolymers, wetting and defoaming agents, preservatives and carbon fibre

TECHNICAL DATA:

Under normal conditions 20°C
 Packing: Plastic Bucket
 Packaging Size: 20kg or 5kg
 Shelf-life: 12 months
 Application Temp Range: +5°C - 35°C
 Consumption: Approx 12m²/1 Litre
 Drying time: Approx 1 hour
 Touch Dry: 15-20mins



DP70

Cemimax DP70 is a Low emission, multi-purpose dispersion primer for exterior use.

DESCRIPTION:

Dispersion Primer with a wide range of applications, for interior and exterior use, providing overlayment compound DL10 or DL59 is applied within drying time of primer. Not to be left exposed to the elements for more than 2 hours.

ESPECIALLY SUITABLE FOR:

Use on surfaces with well-bonded, waterproof adhesive and smoothing compound residues.

PRODUCT PROPERTIES:

- Ready to use.
- Excellent bond
- Rapid drying
- High coverage
- Solvent-free.
- Suitable for exterior use

BINDERS:

Modified styrene-acrylate copolymers, wetting- and defoaming-agents, preservatives and water.

TECHNICAL DATA: (Under normal conditions at 20°C .)

Packaging: Plastic bucket
 Packsizes: 20 kg, 5 kg
 Shelf-life: 12 months
 Working temperature: +5°C - 35°C
 Consumption: Approx. 12m²/1 Litre
 Drying time: 4-6 hours
 Touch Dry: 15-20mins



DP89

Cemimax DP89 is Extremely high performance dispersion primer for absorbent subfloor.

DESCRIPTION:

Dispersion Primer with a wide range of applications, for interior and exterior use, providing overlayment compound with all our levelling products is applied within drying time of primer. Not to be left exposed to the elements for more than 2 hours.

SUITABLE FOR:

Use on surfaces with well-bonded, waterproof adhesive and smoothing compound residues.

PRODUCT PROPERTIES:

- Ready to use
- Excellent bond
- Rapid drying
- High coverage
- Solvent-free
- Suitable for exterior use

BINDERS:

Modified styrene-acrylate copolymers, wetting and defoaming agents, preservatives and carbon fibre

TECHNICAL DATA:

Under normal conditions 20°C
 Packing: Plastic Bucket
 Packaging Size: 20kg or 5kg
 Shelf-life: 12 months
 Application Temp Range: +5°C - 35°C
 Consumption: Approx 12m²/1 Litre
 Drying time: 4-6 hours
 Touch Dry: 15-20mins



DP90

One component, low emission, multipurpose dispersion primer with carbon fibre technology for non absorbency substrates

DESCRIPTION:

Dispersion primer low emission, film forming primer for use over non-absorbent surfaces including non-water soluble adhesive residues. The product cannot be diluted with water and for interior and exterior use, providing overlayment compound DL10 or DL59 is applied within drying time of primer. Not to be left exposed to the elements for more than 2 hours.

SUITABLE FOR:

- Use on non-absorbent substrates, very suitable for existing surfaces in need of refurbishment, such as well-bonded and non-water-soluble adhesive residues including cutback adhesive.
- Dense & smooth surfaces, on soundly bonded ceramic and natural stone tiles, terrazzo, water resistant coatings, epoxy coatings or metal surfaces.

PRODUCT PROPERTIES:

- Ready to use
- Excellent bond
- Very fast drying
- Carbon fibre technology
- Solvent-free

BINDERS:

Modified styrene-acrylate copolymers, wetting and defoaming agents, preservatives and carbon fibre

TECHNICAL DATA:

Under normal conditions 20°C
 Packing: Plastic Bucket
 Packaging Size: 20kg or 5kg
 Shelf-life: 12 months
 Application Temp Range: +5°C - 35°C
 Consumption: Approx 12m²/1 Litre
 Drying time: Approx 1 hour
 Touch Dry: 15-20mins



DP200

1-component PU Fast-Drying Primer and Moisture Vapor Retarder

DESCRIPTION:

Cemimax DP200 is a pure polyurethane resin with very high quality developed particularly for subfloors that must be quickly brought to a condition ready for covering installation. Special can be used as low moisture vapor retarder for concrete and cement-based subfloors. DP200 can be applied to substrates with humidity up to 6% CM. For interior and exterior use.

SUITABLE FOR:

Use on substrates with low damp, on ceramic, terrazzo, stone subfloors, surfaces with well-bonded, waterproof adhesive and smoothing compound residues.

PRODUCT PROPERTIES:

- Fast drying
- Increase the strength of the substrate
- Moisture barrier
- Excellent covering and filling capacity
- Solvent free
- Fast curing
- Easy to apply
- Excellent coverage

TECHNICAL DATA:

Packaging: Plastic bucket

Packsize: 20,5 kg

Shelf-life: 12 months

Colour: Light yellowish

Working temperature: minimum 50 °F (10 °C) at floor level 60 to 80 °F (16 – 27 °C) on radiant heat systems

Drying time: Absorbent surfaces: 40 – 90 min (per coat) Dense surfaces: 60 – 150 minutes.

Application and consumption

100 - 150 g/m² : As a primer when only one layer is applied (up to 92% R.H. for one coat).

250 - 350 g/m²: As a moisture barrier when two to three layers are applied (up to 98% R.H. for two coat).

Consumption is dependent on surface structure and absorbability of subfloor.



ULTRAMAX MS

DESCRIPTION:

Ultramax MS is a one component high performance adhesive sealant based on Hybrid Silyl Modified Polymers. Ultramax Ms provides the strength of polyurethane with a weathering resistance and shorter cure times of silicone. The properties that Ultramax Ms is made up of is well suited as a adhesive sealant in the demanding building, construction and engineering industries which provides superb primerless adhesion to all Flooring materials commonly used in these industries. This innovative and environmentally friendly product cures quickly in ambient temperatures and retains excellent bond strength, elasticity and tear resistance over the years. It skins over in a short time resisting dust and dirt pickup and can be applied in thick layers without shrinking or bubbling. Ultramax MS will not stain and is very compatible with commonly used flooring systems. It will not yellow or crack or show signs of aging when exposed to adverse weather conditions and harsh UV radiation. Ultramax Ms does not contain solvents, isocyanates and silicones.

PRODUCT PROPERTIES:

- Fast curing
- No carcinogens
- Built in moisture barrier
- Acoustic properties
- Highly flexible
- Great beading stability
- Suitable for under floor heating
- Easy clean up

TECHNICAL DATA:

Working temperature: +5 C ~ +35 C 75% Humidity

Opening time: 30-40 minutes

Working time: 60 minutes

Walk on: after 6-8 hours

Sanding of floors: after 48 hours

Coverage: 1.2-1.4m²/per litre using a 3-4mm v-notched trowel .



CEMIMAX A2000

Very high strength for resilient floor coverings

DESCRIPTION:

Dispersion adhesive for resilient synthetic floor and wall coverings in interior areas.

ESPECIALLY SUITABLE FOR:

Rubber flooring sheet, PVC sport flooring sheet, vinyl tile and cushioned vinyl coverings, including those with textile fleece backings.

PRODUCT PROPERTIES:

- Stable quality Bonding, layer has durable resilience.
- Good water resistance, excellent bonding strength.
- Very high initial tack and final bonding strength.
- Easy application, high coverage rate.
- Low VOC

BINDERS:

Modified polyacrylate-copolymers with bond streng- thening resins.

TECHNICAL DATA: (Under normal conditions at 20 °C.)

Packaging: 5kg,25kg Plastic drum
 Shelf-life: Min. 12 months
 Colour: Cream-white
 Working temperature: +5°C - 35°C
 Consumption: 3.75m²/1 Litres
 Open time: 5-30 minutes
 Working time: 1-2 hours
 Set to traffic: After 24-48 hours
 Final strength: After 5-7 days



CEMIMAX A350

Very high strength for resilient floor coverings

DESCRIPTION:

Dispersion adhesive for resilient synthetic floor and wall coverings in interior areas.

ESPECIALLY SUITABLE:

Rubber flooring sheet, PVC sport flooring sheet, vinyl tile and cushioned vinyl coverings, including those with textile fleece backings.

PRODUCT PROPERTIES:

- Good water resistance, excellent bonding strength.
- Very high initial tack and final bonding strength.
- Easy application, high coverage rate.
- Low VOC

BINDERS:

Modified polyacrylate-copolymers with bond streng- thening resins.

TECHICAL DATA: (Under normal conditions at 20 °C.)

Packaging: 5kg, 25kg Plastic drum
 Shelf-life: Min. 12 months
 Colour: Cream-white
 Working temperature: +5°C - 35°C
 Dry time: 30mins
 Consumption: 3.75m²/1 Litres
 Open time: 5-30 minutes
 Working time: 1-2 hours
 Set to traffic: After 24-48 hours
 Final strength: After 5-7 days



CEMIMAX A600

DESCRIPTION:

Cemimax A600 is a waterbased dispersion adhesive for linoleum floor coverings on absorbent substrates. Wet adhesives with short drying time. For interior use.

ESPECIALLY SUITABLE FOR:

Linoleum floor coverings in sheets and panels in resi- dential and commercial areas.

PRODUCT PROPERTIES:

- Very high initial tack and final bonding strength.
- Bonding layer has durable resilience.
- Low drying time.
- Solvent free.
- Low VOC.

BINDERS:

Modified polyacrylate-copolymers with bond streng- thening resins.

TECHNICAL DATA: (Under normal conditions at 20 °C.)

Packaging: 20kg/10kg/5kg Plastic drum

Shelf-life: Min. 12 months

Colour: Cream-white

Working temperature: +5°C - 35°C

Consumption: 3.75m²/1 Litres

Drying time: 30 minutes

Set to traffic: After 24 hours

Final strength: After 3 days

Open time: 5-30mins



CEMIMAX A360

Very high strength for resilient floor coverings

DESCRIPTION:

Dispersion adhesive for resilient synthetic floor and wall coverings in interior areas.

ESPECIALLY SUITABLE:

Rubber flooring sheet, PVC sport flooring sheet, vinyl tile and cushioned vinyl coverings, including those with textile fleece backings.

PRODUCT PROPERTIES:

- Good water resistance, excellent bonding strength.
- Very high initial tack and final bonding strength.
- Easy application, high coverage rate.
- Low VOC

BINDERS:

Modified polyacrylate-copolymers with bond streng- thening resins.

TECHICAL DATA: (Under normal conditions at 20 °C.)

Packaging: 5kg, 25kg Plastic drum

Shelf-life: Min. 12 months

Colour: Cream-white

Working temperature: +5°C - 35°C

Dry time: 30mins

Consumption: 3.75m²/1 Litres

Open time: 5-30 minutes

Working time: 1-2 hours

Set to traffic: After 24-48 hours

Final strength: After 5-7 days



JET MAX-8000

Pressure sensitive adhesive for carpet tile

DESCRIPTION:

Cemimax JET MAX-8000 is a very low emission dispersion adhesive for almost all textile coverings, therefore truly universal strong thread-formation, giving reliable adhesion in interior areas.

ESPECIALLY SUITABLE FOR:

- Textile coverings with synthetic secondary backings
- Textile coverings with foam-, latex- or fleece- backings
- Woven goods, needlepunch and natural fibre carpets
- Felt-backed PVC and cushioned vinyl of thickness <2mm coverings

PRODUCT PROPERTIES:

- Stable quality Bonding, layer has durable resilience
- Good water resistance, excellent bonding strength
- Very high initial tack and final bonding strength
- Easy application, high coverage rate

BINDERS:

Modified polyacrylate-copolymers with bond strengthening resins.

TECHNICAL DATA:

Under normal conditions at 20°C

Packaging size: 15kg Plastic drum

Shelf-life: Min. 12 months

Colour: Cream-white

Working temperature: Min. 15 °C at floor level

Consumption: Approximately 120-150 m²/15kg

Open time: 5-30 minutes

Working time: 1-2 hours

Set to traffic: After 24-48 hours

Final strength: After 5-7 days



JET MAX-6000

Pressure sensitive adhesive for vinyl plank flooring

DESCRIPTION:

Cemimax JET MAX-6000 is a very low emission dispersion adhesive for almost all textile coverings, therefore truly universal strong thread-formation, giving reliable adhesion in interior areas.

- Textile coverings with synthetic secondary backings
- Textile coverings with foam-, latex- or fleece- backings
- Woven goods, needlepunch and natural fibre carpets
- Felt-backed PVC and cushioned vinyl of thickness <2mm coverings

PRODUCT PROPERTIES:

- Stable quality Bonding, layer has durable resilience
- Good water resistance, excellent bonding strength
- Very high initial tack and final bonding strength
- Easy application, high coverage rate

BINDERS:

Modified polyacrylate-copolymers with bond strengthening resins.

TECHNICAL DATA:

Under normal conditions at 20°C

Packaging size: 15kg Plastic drum

Shelf-life: Min. 12 months

Colour: Cream-white

Working temperature: Min. 15 °C at floor level

Consumption: Approximately 90-120 m²/15kg

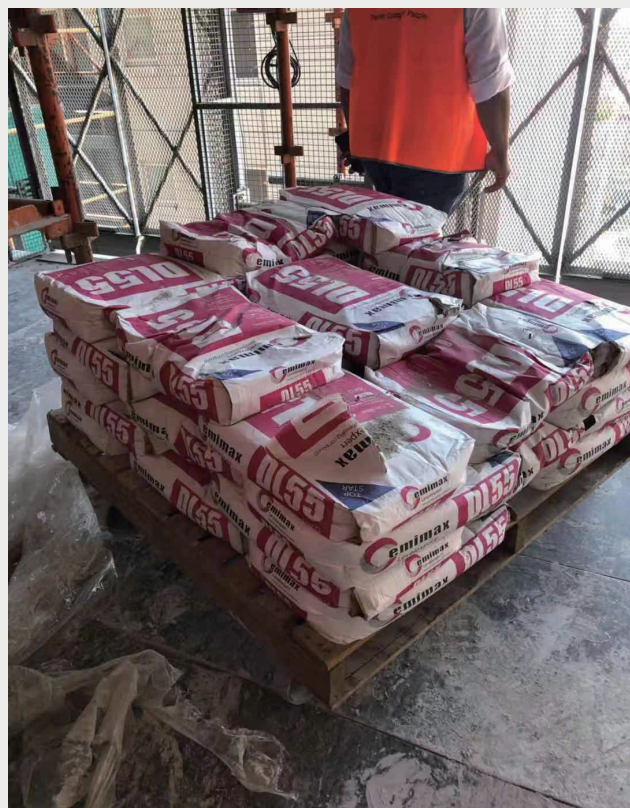
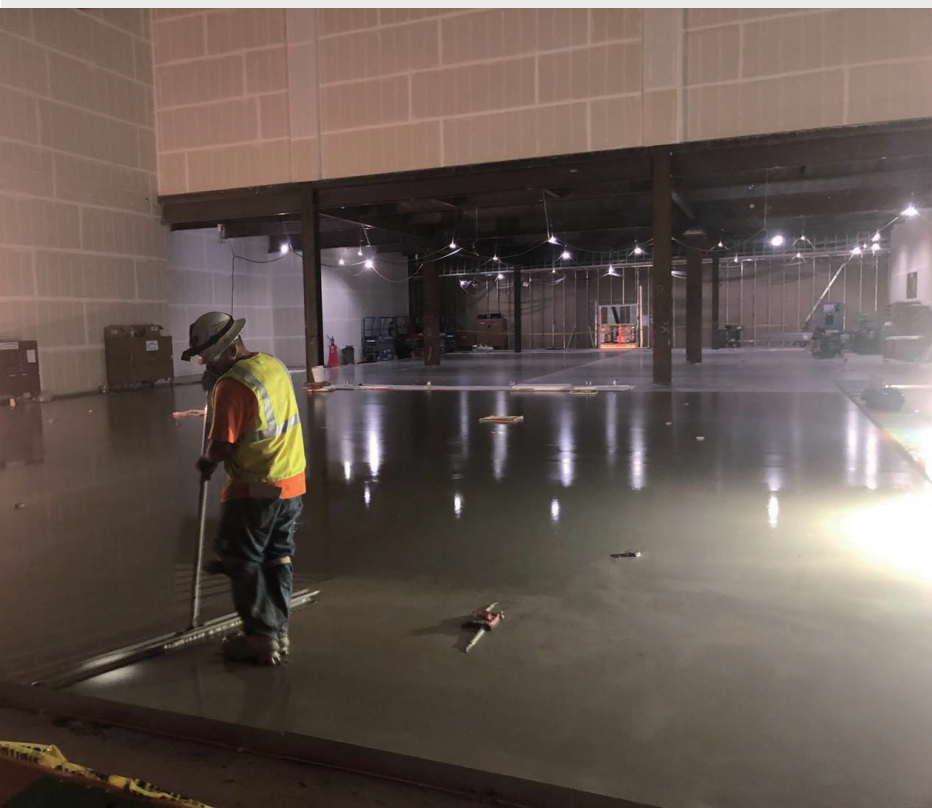
Open time: 5-30 minutes

Working time: 1-2 hours

Set to traffic: After 24-48 hours

Final strength: After 5-7 days







Cemimax Australia Pty Ltd

Sydney Office and Warehouse:

5 Coates Place, Wetherill Park NSW 2164

Melbourne Warehouse:

21 Pauljoseph Way, Truganina VIC 3029

Brisbane Warehouse:

Unit 8 130 Kingston Road, Underwood, QLD 4119

New Zealand Office and Warehouse:

236C BUSH RD,ALBANG,AUCKLAND

